



company
PROFILE



LEMTEK FTUI

**Lembaga Teknologi
Fakultas Teknik
Universitas Indonesia**

**Jl. Salemba Raya No.4 Jakarta 10430
Telp. (021) 3106012, 3907401 (Hunting)
Fax. (021) 3102928
Email : lemtek@centrin.net.id**

INTRODUCTION

LEMBAGA TEKNOLOGI FAKULTAS TEKNIK UNIVERSITAS INDONESIA better known as LEMTEK UI established in 1976 by Faculty of Engineering University of Indonesia, as a reflection of the commitment of the UI in the perpetuation of the society as set out in the Tri Dharma of University.

As a professional institution, LEMTEK UI providing Consulting Services in Engineering, Management and Human Resource Development. LEMTEK UI totally supported by professional experts and laboratory facilities from all departments in the Faculty of Engineering University of Indonesia, including civil engineering, mechanical engineering, electrical engineering, metallurgical engineering, chemical engineering, industrial engineering, environmental engineering and architecture.

In order to improve the capacity and capability of LEMTEK UI to carry out services involving non engineering disciplines, LEMTEK UI also working with other faculties and institutions in University of Indonesia.

VISION & MISSION

Vision:

“Service Excellence through Professionalism”

Mission:

1. As an institution providing consulting services in Engineering, Management and Human Resource Development.
2. As an independent institution that contribute to the development of University of Indonesia

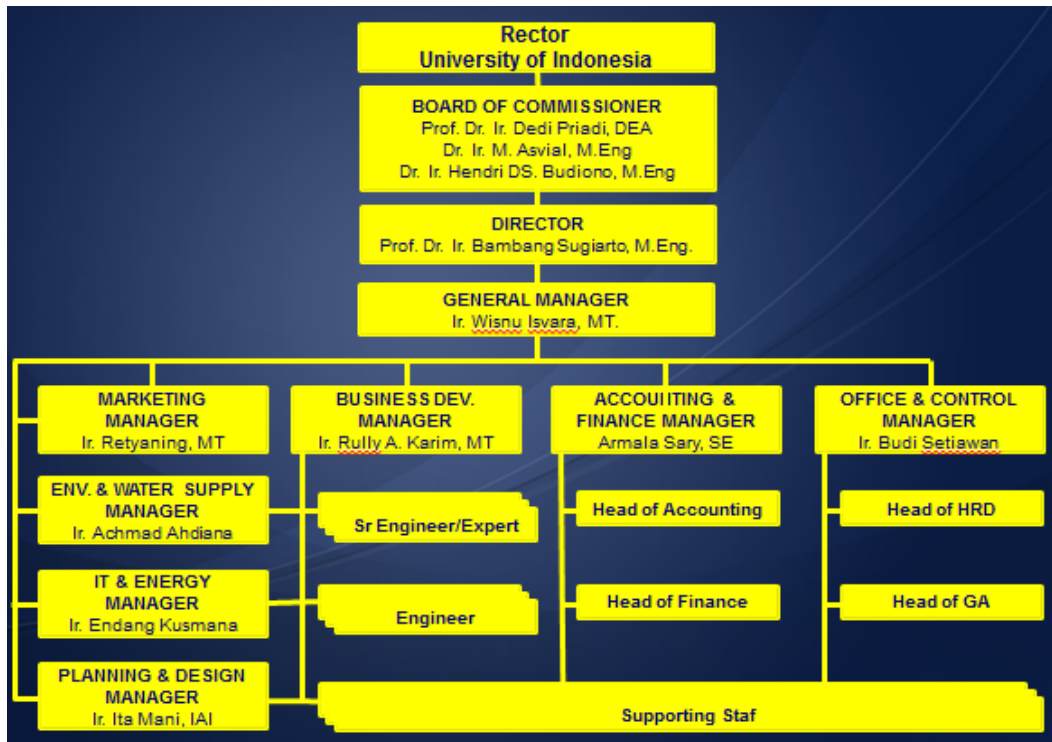
Objective:

1. Marketing the LEMTEK to public and industry according to its mission
2. Improving the quality of asset and management

LEGAL & ADMINISTRATION DOCUMENT

1. Notary Company Act No.12 dated 7 September 1976 by Soeleman Ardjasmita, SH
2. Notary Act Register to Minister of Justice in Jakarta No. 241 dated 7 October 1976
3. The Last Amendment of Notary Company Act No. 42 dated 16 May 2014 by Suparman Hasyim, SH
4. Rector University of Indonesia Decree No. 1369/SK/R/UI/2009 dated 17 November 2009 : The Determination of the Name of Academic Ventures in University of Indonesia
5. Rector University of Indonesia Decree No. 1002/SK/R/UI/2014 dated 2 May 2014 : Designation of Head of Academic Venture PE-PPST, CCIT-CEP and LEMTEK Faculty of Engineering University of Indonesia
6. Domicile License No. 153/1.824/VIII/2014 dated 7 August 2014
7. Tax Number (NPWP) 01.364.476.0-023.000
8. Taxable Entrepreneur Confirmation Letter (PKP) : PEM 162.PKP/WPJ.06/KP.0903/2004

ORGANIZATION



CONSULTING SERVICES



LABORATORY FACILITIES

In providing consulting services, Lemtek UI supported by professional experts and laboratory facilities in Faculty of Engineering University of Indonesia. The laboratories including:

Civil Engineering Department

- Structure and Material
- Soil Mechanics
- Hidrolics, Hidrology and River
- Environmental Engineering
- Surveying & Transportation

Architecture Department

- Studio
- Computer Simulation
- Modelling
- Dark Room
- Building Physics

Mechanical Engineering Department

- Manufacture & Otomation Technology
- Fluid Mechanics
- Mechanic and Biomechanic Design
- Production Process
- Heat Transfer
- Cooling & Air Conditioning
- Thermodynamic

Industrial Engineering Department

- Ergonomic Center
- System Engineering, Modelling & Simulation
- Information System & Decision Making
- Manufacture System
- Quality & Raliability Engineering
- Product design & Inovation

Electrical Engineering Department

- Electrical and Electronic
- Energy Conversion
- Electrical Power System
- Electronic
- Control
- Digital
- Telecommunication
- Networking
- Optoelectronics
- Multimedia

Metallurgy Engineering Department

- Chemical & Physical Metallurgy
- Mechanical Metallurgy
- Processing Metallurgy
- Corrosion and Metal Protection
- Metallography and HST
- Non-Destructive Test
- Advanced Materials

Chemical Engineering Department

- Chemical and Natural Product
- Chemical Process Intesification
- Bioproses Engineering
- Sustainable Energi

**LEMTEK FTUI EXPERIENCES
IN 2014**

NO.	PROJECT NAME	PROJECT OWNER
1.	Consultant Services of Technical Assistance Front End Engineering Design (Feed) Mini LNG Plant Batam	PT. Gagas Energi Indonesia
2.	Independent Structural Design Checker Against The construction work Graving Dock and Pier Development Noahtu Bandar Lampung	PT. Waskita Karya (Persero) Tbk
3.	Workshop "Study Market Analysis For a Business Development Field Kuala Langsa"	PT. Medco E&P Malaka
4.	Research Eks Material Car Tangki leak sequel accident	PT. PERTAMINA (Persero)
5.	Preparation of Feasibility Study of Development of Power Plant Bamboo	PT. Karyawan Bio Energi
6.	Detail Engineering Design (DED) Overlay Runway Bandara Soekarno Hatta	PT. Angkasa Pura II
7.	Engineering Consultant To Conduct Evaluations Failure/Damage for Retaining Structure Area Water Intake Project PLTU 1 – Kalimantan Barat	PT. Tugu Kresna Pratama
8.	Appraisal Toilet Facilities Modernization Works Building Terminal 1 and Terminal 2 of Soekarno-Hatta Airport	PT. Angkasa Pura II (Persero)
9.	Consulting Services In Auction Process Retrofit DCS and Electrical System PLTGU Blok I & II PT. PLN (Persero) Sektor Pembangkitan Belawan	PT. PLN (Persero) Pembangkitan Sumatera Bagian Utara
10.	Development Plan for Water Resources Information System at Province Kalimantan Utara	Dinas Pekerjaan Umum Bid Sumber days Air Kalimantan Utara
11.	Training Of Trainers (TOT) Project Feasibility	Program Dukungan Manajemen IV SESMENEG PPN/SETTAMA BAPPENAS

NO.	PROJECT NAME	PROJECT OWNER
12.	Landslide Evaluation Of Toll Road Porong-Gempol	PT. Asuransi Allianz Utama Indonesia
13.	Procurement of Consulting Services Business Process Model Formulation and Governance Systems/ Sistem Tata kelola (STK) Function Project Incubation	PT. Pertamina (Persero)
14.	Site Investigation PLTGU/MGU Makassar Peaker (450 MW)	PT. PLN (Persero) Pusat Enjiniring Ketenagalistrikan
15.	Feasibility Study Diversification Alumunium Product	PT. Inalum (Persero)
16.	Making procedur for Process Safety Management (PSM) and Environmental Management System (SML)	PT. Perta Arun Gas
17.	Training of Project Feasibility	Program Dukungan Manajemen IV SESMENNEG PPN/SETTAMA BAPPENAS
18.	Site Investigations Project Power Plant Jawa-7 (2x1000 MW)	PT. PLN (Persero) Pusat Enjiniring Ketenagalistrikan
19.	Valuation Of Assets Public Terminals/Dock PT. Citra Karya Nusantara	PT. Karya Citra Nusantara

**LEMTEK FTUI EXPERIENCES
IN 2013**

NO.	PROJECT NAME	PROJECT OWNER
1.	Existing Structural Audit IS Plaza Building	PT. Asuransi Bangun Askrida
2.	Document Preparation for Feasibility Study Prasarana Perhubungan Darat PIP Program	Bappeda Pemerintah Kabupaten Boalemo
3.	Consultancy Advisory of Design & Build Sultan Thaha Jambi Interior Airport	PT. Angkasa Pura II (Persero)
4.	Research and Turap Design for Flood Preparation in Unit Pasar Besar Cipulir Jakarta Selatan	PD. Pasar Jaya
5.	Consultancy for Structural and Mechanical Work of CNG Plant PLTGU Tambak Lorok	PT. PLN (Persero)
6.	Drainage Design Review of Lingkar Luar Jakarta W2 Utara Toll Road (kebon Jeruk-Ulujami)	PT. Marga Lingkar Jakarta
7.	Feasibility Study of RSUD Dr. Muhammad Zein Painan Relocation	RSUD Dr. Muhammad Zein Pemkab Pesisir Selatan
8.	Evaluation and Mak 8M 453 C S/N 27190 Machine Foundation Repaired Design In PLTD Kahayan PT. PLN (Persero) Palangkaraya	PT. PLN (Persero) Palangkaraya
9.	Research Applied Research Technology "Expert System" For Upstream Integrated Material Management	PT. Pertamina (Persero)
10.	Studies of CNG Plant Facility as a Fuel Gas Storage for Gas Fired Plant Riau (Peaker) 200 MW	PT. PLN (Persero) Pusat Enjiniring Ketenagalistrikan
11.	Selection of Part Time Workers in PT. Angkasa Pura I (Persero), Ngurah Rai Commercial Strategic Business Unit	PT. Angkasa Pura I (Persero) Ngurah Rai Commercial Strategic Business Unit

NO.	PROJECT NAME	PROJECT OWNER
12.	Studies of Alternative Solution Mark V LCM Kusangan and PLTGU Exitasi System	PT. Indonesia Power Unit Bisnis Pembangkitan Semarang
13.	Soil Investigation of Peaker Muara Karang PLTG (400-500) MW	PT. PLN (Persero) Pusat Enjiniring Ketenagalistrikan
14.	Energy Reasearch for Kuala Langsa UPL, Block A, Aceh	PT. Medco E & P Malaka
15.	Risk Impact Analysis of Pertamina Gas Crossing Pipe in MM2100 Area, Cibitung, Bekasi, West Java	PT. Igas Utama
16.	Mock Up Repairing, Visualisationand 3D Modelling of LNG Bontang RefineryforResearch dan Presentation	PT. Badak NGL
17.	Training Of Trainers On Project AppraisalEducation and Training Program (Diklat)	Program Dukungan Manajemen IV SESMENNEG PPN/SETTAMA BAPPENAS
18.	Public Private Partnership (PPP) Education and Training Program (Diklat)	Program Dukungan Manajemen IV SESMENNEG PPN/SETTAMA BAPPENAS
19.	Project Appraisal Education and Training Program (Diklat), Batch I	Program Dukungan Manajemen IV SESMENNEG PPN/SETTAMA BAPPENAS
20.	Technical review points Turap Prone to collapse (Broken) (Swakelola University) (ABT TA 2013.)	Dinas Bina Marga dan Sumber Daya Air Kota Depok
21.	Flare & Relief Conceptual Design and Issues Identification Related With Gas CO2 Venting from Gas Processing Facility JTB	PT. Pertamina EP Cepu
22.	Project Appraisal Education and Training Program (Diklat), Batch II	Program Dukungan Manajemen IV SESMENNEG PPN/SETTAMA BAPPENAS
23.	Formulation of Standard Operating Procedure	PT. Kalrez Petroleum (Seram) Ltd, Jakarta
24.	PLTGU Muara Karang (450-500) MW Field Project Studies	PT. PLN (Persero) Pusat Enjiniring Ketenagalistrikan
25.	Consultation Improvement SHE-Q MS	PT. Badak NGL

**LEMTEK FTUI EXPERIENCES
IN 2012**

NO.	PROJECT NAME	PROJECT OWNER
1.	Investigation and Structure Verification of Pasar Petojo Enclek Building, Central Area I	PD Pasar Jaya
2.	Assesment dan Structure Testof Jembatan Siak 3 Project	PT. Waskita Karya (Persero)
3.	Quantity Surveyor Consultancy of Interior Design and Build Raja Haji Fisabilillah Tanjung Pinang Airport	PT. Angkasa Pura II (Persero)
4.	Toll Equipment Procurement for Lingkar Luar Jakarta Ruas W2-Utara Toll Road (Kebon Jeruk-Ulujami)	PT Marga lingkar Jakarta
5.	Structural Design of Dunia Fantasi Maxima Stage	PT. Taman Impian Jaya Ancol
6.	Consultancy of RCMS ELE System Replacement Phase I, Soekarno-Hatta Airport	PT. Angkasa Pura II (Persero)
7.	Risk Assessment of Crude Oil Terminal Lawe-Lawe	PT. Pertamina (Persero)
8.	Independent Checker of Structural Design and Quality Management of Nusa Dua Toll Road Development- Nurah Rai - Benoa	PT. Waskita Karya
9.	Onshore Processing Facility Safety Dossier for Ujung Pangkah Block, Gresik – Rast Java	HESS (Indonesia-Pangkah) Limited
10.	Structural Strengthening of Pasar Kebayoran Lama South Area I Escalator	PD Pasar Jaya
11.	StructureVerification of Pasar Rumput South Area II Eksisting Building, South Jakarta	PD Pasar Jaya
12.	Evaluation and Methode Review of NorthRunway Repairing, Soekarno-Hatta Airport	PT. Angkasa Pura II (Persero)
13.	Evaluation of 4 (four) Eksisting Bridge, Topographyand Soil Testand Terminal Buatan Bridge Stuctural Design	PT. Pertamina EP Unit Bisnis EP Lirik

NO.	PROJECT NAME	PROJECT OWNER
14.	Consultan of Remaining Usefel Life (RUL) Time Study of Arun LNG Receiving - HUB & Regasification Terminal Project	PT. Pertamina (Persero)
15.	Feasibility Study for Upgrade Capacity andModernisation of Suralaya PLTU Unit 3 and 4	PT. Indonesia Power
16.	Waste Management of Plastic Unilever Product in DKI Jakarta	Yayasan Unilever Indonesia
17.	Consultancy for Review and Evaluation of Rig Elektrikal VFD 1500 HP Procurement Process	PT. Pertamina Drilling Service Indonesia
18.	Consultancy for Term of Reference (TOR) and Instrubtion to Bidder (ITB) Preparation for Rig Elektrikal VFD Procurement	PT. Pertamina Drilling Service Indonesia
19.	Feasibility Study for Rehabilitation, Life Extion, Capacity Upgrade andEquipment Modernisationfor PLTP Kamojang Unit 1,2 dan 3 PT. Indonesia Power	PT. Indonesia Power
20.	Consultancy for Engineering Estimate Rehabilitation Internal Electrostatic Precipitator Unit 7 PLTU Suralaya	PT. Indonesia Power
21.	Optimalisation Study for Utilization and Electricity Management, Kabupaten Kepulauan Anambas	Dinas DIm Neg dan Sumber daysa Mineral Kab. Kep. Anambas
22.	Provision of Gas Market Study Consultancy Services	Premie Oil
23.	Investigation and Structural Verification Advertising Boards Consultancy Services	PT . Granitoguna Building Ceramics
24.	Waste Management Study of Post Cunsumer Cartons Tetra Pak in DKI Jakarta 2012	PT. Tetra Pak
25.	Assessment Rig Consultancy Services	PT. Pertamina (Persero)
26.	Independent Assesment Safety Management System for Donggi Senoro LNG Sertification Project	PT. Sucofindo (Persero)
27.	Study Of Area Contribution in West Ancol Reclamation, ± 2,68 Ha	PT. Pembangunan Jaya Ancol
28.	Pleminary study of Transmission Gas Segment Construction in Cirebon-Muara Tawar, West Java	PT. Pertamina Gas

NO.	PROJECT NAME	PROJECT OWNER
29.	Structural Design of RKB I Building Lift, Fakultas Teknik Universitas Indonesia Kampus UI Depok	Dekan FTUI
30.	Feasibility Study of Integrated Waste Management System in Head Office of Pertamina	PT. Pertamina (Persero)
31.	Public Private Partnership (PPP) Education and Training Program (Diklat)	Program Dukungan Manajemen IV SESMENNEG PPN/SETTAMA BAPPENAS
32.	Corosion Internal Study of CO2 at Distribution Gas Pipe between SKG Mundu to Tegalgede JBB PT. Pertamina Gas Area	PT. Pertamina Gas
33.	Feasibility Study Of Aerotrains Taman Buah Mekarsari-Kampung Rambutan Route	PT. Rekayasa Industri
34.	Advisory Consultancy Service of Furniture and Landscape for Operational Building, Kualanamu Airport	PT. Angkasa Pura II (Persero)
35.	Study of Academic Formulation Area Development Policy in Kemang Village	PT. Persada Mandiri Abadi
36.	Study of UKL-UPL Development in TBBM Area Sumbagut (TBBM Sei Siak, TBBM Tembilahan, TBBM Kisaran dan TBBM Meulaboh)	PT. Pertamina (Persero) Medan
37.	Energy Audit in Fuel Marketing Region 1 Building, Medan	PT. Pertamina (Persero) Medan
38.	Investigation and Existing Structural Verification in Senen Building, Block V 3rd and 4th floor	PT. Jaya Real Property, Tbk
39.	Risk Assessment of Crossing Road Bridge & Crossing HDPE Underground Pipe, between WTP Raw Water and ROW Transmission Gas Pipe KM 48,8 Distrik Tegalgede	PT. LIPPO CIKARANG, Tbk
40.	Technical Study for Feasibility of Using Floor Data in PT. BNI Securities Head Office	PT. BNI SECURITIES
41.	Feasibility Study of Infratone Procurement Sector in Bukit Asam Pembangunan	PT. PLN (Persero) Pembangunan Sumatera Bagian Selatan
42.	Investigation Report of B-9274-UU Tank after fired	PT. Pertamina (Persero) Fuel Retail Marketing Region III

NO.	PROJECT NAME	PROJECT OWNER
43.	Feasibility Study of Replacement of Glass Tunnel Garbarata in 1stand 2nd Terminal, Soekarno-Hatta Airport	PT. Angkasa Pura II (Persero)
44.	Site Investigation of PLTU Lontar Ekspansi (1x315 MW) Project	PT. PLN (Persero) Pusat Enjiniring Ketenagalistrikan
45.	Consultancy Services of Iyang Argopuro Gravitation	PT. Pertamina Geothermal Energy
46.	Feasibility Study of Replacement of Glass Tunnel Garbarata in 1stand 2nd Terminal, Soekarno-Hatta Airport	PT. Angkasa Pura II (Persero)

**LEMTEK FTUI EXPERIENCES
IN 2011**

NO.	PROJECT NAME	PROJECT OWNER
1.	Investigation and Verification of collapse building of Rukan Owned by PT. Kalimantan Sewit KusumaJI, Tiang Bendera V No. 38 D,E,F Tambora Jakarta Barat	PERSADA (PT. Bahtera Arung Persada)
2.	Planning repair market building post wildfire in Pasar Kebayoran Lama Area Selatan I	PD Pasar jaya
3.	Making Drilling Rig with a range of power capacity 1000HP-2000 HP	PT. Pertamina Drilling Services Indonesia
4.	Site Investigation of PLTGU IPP Bangkanai 120 MW	PT. PLN (Persero) Pusat Enjiniring Ketenagalistrikan
5.	Design of Jetty and Administration Office of PLTU Bintan	PT. Tenaga Listrik Bintan
6.	Design of Jetty and Administration Office of PLTU Bintan	PT. Sakti Mas Mulia
7.	Overhead Crane Foundation Design in Belawan, Medan	PT. Sakti Mas Mulia
8.	Engineering Counsultant De-Bottlenecking HDPE Project	Chandra Asri Petrochemical
9.	Investigation and Feasibility Analysis of Market Structure Tebet Barat Jakarta	PT. Bintang moderen Sumberlestari
10.	Soil investigation for Prawiro Tower and Sjafrudin Prawiranegara and Design Building Data Center in KOPERBI-Jakarta	Biro Logistik Bank Indonesia
11.	The preparation of the spatial plan revision Rokan Hulu	Bappelitbang Kab Rokan Hulu
12.	Feasibility Evaluation of Structures	PT. Bukaka Teknik Utama
13.	Procurement Corrosion Studies on Crude Oil Pipeline 6' x 40 Km in Banyu Urip - Mudi	PT. Pertamina EP Cepu
14.	Research, Assessment and Development of Non-defense equipment and defense equipment that can be produced domestically	Badan Penelitian dan Pengembangan Kementerian Pertahanan RI

NO.	PROJECT NAME	PROJECT OWNER
15.	Review and Evaluation of Feasibility Study of LNG FSRU C Labuhan Maringgai	PT. Perusahaan Gas Negara
16.	Soil investigation for Building Design in KOPERBIS Social Facilities and Design Building Human Capital Development Center (Learning Center) Bank Indonesia	Biro Logistik Bank Indonesia
17.	The preparation of the Proposal and the Consultant TOR International Design Contest Grand Area in Kemayoran Kemayoran Complex	Pusat Pengelolaan Komplek Kemayoran
18.	Consulting Services Assessment Study RKS and RAB and jobs development CCTV System Terminal 1 and 2	PT. Angkasi Pura II (Persero)
19.	Technical measurements Structure Over Head Crane (1 Unit) on Workshop PDSI- DAJ	PT. Pertamina Drilling Services Indonesia
20.	Construction of production facilities gas on field Jambaran Tiung Biru	PT. Pertamina EP
21.	Making Picture PFDP & ID Drawing Isometric in 7 (Seven) Location Terminal Area Fuel Sumbagut	PT. Pertamina (Persero) Medan
22.	Assessment Study of Price Fairness At Work Advanced Architectural and Roof Structure Field Airport New Terminal Building Kualanamu	PT. Angkasa Pura II (Persero)
23.	Hydrology, Flood & Sedimentation Study for Project PLTU RIAU 2x110 MW	PT. PLN (Persero)
24.	Procurement FS choice the Technology Repairing Emissions Gas PLTU Suralaya	PT. Indonesia Power
25.	Engineering Estimate Main Transformer dan Busing Unit 1-4 PLTU Suralaya	PT. Indonesia Power
26.	Traning of Public Private Partnership (PPP)	Program Dukungan Manajemen IV SESMENNEG PPN/SETTAMA BAPPENAS
27.	Investigation and Verification of Security Structure Existing School Building CHIS-Bali	PT. Asuransi Harta Aman Pratama
28.	Feasibility Services Procurement and Distribution of Gas for PLTGU Priok	PT. Indonesia Power

NO.	PROJECT NAME	PROJECT OWNER
29.	Assesment and Sertification SKPP 1 Batang distribution pipe PT. Moeladi KHT-CLM	PT. Sumber Energy Utama
30.	Simulation Computational Fluid Dinamics (CFD and Rig Desain 61-105C)	PT. Pupuk Iskandar Muda

DO NOT COPY

**LEMTEK FTUI EXPERIENCES
IN 2010**

NO.	PROJECT NAME	PROJECT OWNER
1	Site Mapping and Land Topography Survey School of Medicine Building Phase II Universitas Indonesia	FKUI
2	Study of Foundation STG#1.0 PLT GUT Tambak Lorok Semarang	PT. Indonesia Power
3	Study for Construction Rehab of Addition Floor Itjen Building Dephan	Itjen Dephan
4	Review and Evaluation of the Feasibility Study of Floating LNG Terminal Medan North Sumatra	PT. Perusahaan Gas Negara (Persero) Tbk
5	Site Investigation of Tembilahan Power Plant (2x7 MW) 1067	PT. PLN (Persero) Jasa Enjiniring
6	Addition of ASH Valley Structure Consultancy Services	PT. Indonesia Power
7	Assessment of Gas Needs in Java and Riau Mainland	PT. Pertamina Gas
8	Site Investigation of Sanggau Power Plant (2x7 MW) 1066	PT. PLN (Persero) Jasa Enjiniring
9	Site Investigation of Sintang Power Plant (2x7 MW) 1065	PT. PLN (Persero) Jasa Enjiniring
10	Documents Preparation for Heritage Building Restoration Team	FKUI
11	Safety Analysis and Investigation of Existing Building Structures of Kebayoran Lama Market Post-Fire	PT. Asuransi Bangun Askrida
12	Structural Investigation and Verification to Know the Cause of Rubber Dryer Buildings Collapse of PT. Mardec Banyuasin Musi Lestari in South Sumatra	PT. Bahtera Arung Persada
13	Investigation & Verification of Structural Safety of Metro Atom Building Psr. Baru	PT. Duta Kirana
14	Re-Engineering of rig substructure N110M1/18U Lubelin Lampung	PT. Pertamina Drilling

NO.	PROJECT NAME	PROJECT OWNER
15	Structural Strength Test for Fire Claim	PT. Asuransi Bringin
16	Corrosivity and Soil Resistivity Survey of Pondok Makmur Development Project	PT. Pertamina EP
17	Site Investigation of Singkil Power Plant (2x3 MW) 1082	PT. PLN (Persero) Pusat Enjiniring Ketenagalistrikan
18	Engineering Calculation for RIG BW 87200 HP Pertamina EP Field Rantau	PT. Survindo Dwi Putra
19	Study for Dynamic Toll Tariff	PT. Jasa Marga (Persero)
20	Material Selection Study for Suban New Shell and Tube Heat Exchanger	Connoco Philips
21	Inventory & Harmonization law Sector with the Regional	Kemendagri
22	Research, Documentation and Creation Document Procurement of Conservation Buildings Owned Bank Indonesia on Jl. Roa Malaka No. 21-23 Jakarta	Bank Indonesia
23	Risk Assessment Trunkline Pipe of SPU- Loading Terminal	PT. Pertamina EP
24	Engineering Calculation for Menbaske Structure	PT. ISTECH RESOURCES ASIA
25	Structure Re-Engineering of Pony Sub Rig N80	PT. Pertamina Drilling Services Indonesia
26	Optimization of the Acceptance and Distribution Facility in Gresik LOBP (AI.oF5.004), Phase I : Consultancy Services of Engineering Preparation of Refinement Office S&D Region III	PT. Pertamina
27	The Study of Small Scale LNG Utilization for Eastern Indonesia	PT. PLN (Persero)
28	Evaluation & Design Services Floor Repair HP Heater Structure Turbine Units 1-4	PT. Indonesia Power

NO.	PROJECT NAME	PROJECT OWNER
29	Training of Variable Frequency Drive (VFD)	PT. Pertamina Drilling Services Indonesia
30	Evaluation of Posthabitation Building Central Medical Unit	RSCM
31	Assessment Study of Price Fairness Airport Facilities Development	PT. Agkasa Pura II (Persero)
32	The study of Manufacture P&ID and PFD of 6 (six) fuel oil in Pertamina (Persero) Borneo Marketing Unit Marketing and Trade Directorate	PT. Pertamina Persero

**LEMTEK FTUI EXPERIENCES
IN 2009**

NO.	PROJECT NAME	PROJECT OWNER
1.	Spatial Plan of North Buton	Dinas Pekerjaan Umum Kabupaten Buton Utara
2.	Study of Runway Construction Strength At Soekarno Hatta Airport.	PT. Angkasa Pura II (Persero)
3.	OD Trip Study and Toll Tariff Sensitivity in Traffic on Implementation Plans Toll Road Single Tariff at Prof. Dr. Ir. Sedyatmo Toll Road and Evaluation of V/C Ratio on Taman Mini-Cibubur Segment	PT Jasa Marga (Persero) Tbk
4.	Bearing Inspection of Top Drive 500 HP Maritime in Sunter Warehouse Jakarta.	PT. Pertamina Drilling Indonesia
5.	Assessment of 3 (three) Units of Rig Size 1500 HP, 1000 HP and 450 HP (F200 DEC, N80 UE, SKYTOP 450 HP).	PT. Pertamina Drilling Indonesia
6.	Study for Stopping Water Ingress at Cilamaya ORF Control Building	PT. Indokomas Buana Perkasa
7.	Job Training of Laboratory Room	Dinas Kependudukan dan Pencatatan Sipil Pemda Prov DKI Jakarta
8.	Ash Valley Planning Services of Suralaya Power Plant	PT. Indonesia Power UBP Suralaya
9.	Soil Resistivity Survey, Additional on Offshore Geotechnical Survey on Sowan Offshore Up 15M of Seawater Depth-Banyu Urip Project	PT. Pertamina EP Cepu

NO.	PROJECT NAME	PROJECT OWNER
10.	Consultancy Services of Traffic Studies and Supporting Parameters of JORR2 Toll Road Feasibility Study	PT. Jasa Marga (Persero) tbk.
11.	Consultancy Services of Work Activity Patterns Formulation of PT. Jasa Marga (Persero) in the Traffic Accident Reduction Efforts	PT. Jasa Raharja (Persero)
12.	Consulting Services of SIP3 Information Technology Audit.	PT PLN (Persero) Distribusi Jawa Tengah & D.I. Yogyakarta

**LEMTEK FTUI EXPERIENCES
IN 2008**

NO.	PROJECT NAME	PROJECT OWNER
1.	MK Building Services Department of Defense	Dep. Pertahanan RI
2.	Willingness to Pay (WPT) toll roads Jakarta-Cikampek and Prof. Dr. IR. Sedyatmo	PT. Jasa Marga
3.	Implementation of The Review of The Comparative Advantages of Storage Tanks Onshore Versus Offshore Storage (FSO)-Banyu Urip Project	PT. PERTAMINA EP CEPU
4.	Geotechnical survey plans for pipelines and 20 "60 km and the Tank Farm – Banyu Urip Project PT. Pertamina EP Cepu	PT. Pertamina EP Cepu
5.	Mapping the topography of Pipeline 20 ", 60 km x 12 m – Banyu Urip Project.	PT. Pertamina EP Cepu
6.	Feasibility study in order to Determine the supply of electrical energy is most Optimal for the needs of the operation as well as the appropriateness of the evaluation of the feasibility of electricity distribution network of Existing Tranmisi & Field Region Pangkalan Susu Sumatera	PT. Pertamina EP Region Sumatera
7.	Evaluation of Engineering and QA/QC Builders/Repair SPM # 6 (SO. 1131) BP West Java for use on the Pangkalan Susu	PT. Pertamina EP Regian Sumatera
8.	Manufacture Of Electric Power Supply Design Development To The Marunda	PT. PLN Distribusi Jakarta Raya dan Tangerang
9.	The Consultant Preparing The Feasibility Study On The Development Plan Of The Apron Heading VI Port Of Sunda Kelapa	PT. (Persero) Pelabuhan Indonesia II Cab., Sunda Kelapa
10.	Additional Mapping the topography of Pipeline 20 ", 60 km x 12 m – Banyu Urip Project.	PT. Pertamina EP Cepu
11.	Assement Roro Jetty SPJ	PT. Indonesia Power
12.	Animated scale model making services & Tahura Enim (package 08-069)	PT. Bukit Asam
13.	Additional Advanced Topographic Mapping pipelines and 20 ", 60 km x 12 m – Banyu Urip Project.	PT. Pertamina EP Cepu

NO.	PROJECT NAME	PROJECT OWNER
14.	ITB Document for FEED study "Crude Oil Pipeline – Storage Tanks – SPM, Banyu Urip – Sowan Project".	PT. Pertamina EP Cepu
15.	Execution of Road Roughness Conditions Data Updating, on a Secondary arterial road in 2008	Dinas PU Prov. DKI Jakarta
16.	The study Area Sedimentasi Dredging Puddle Besai HYDROELECTRIC POWER PLANT (2184A)	PT. PLN (Persero) JE
17.	Measurement Of Radio Communication Equipment Lease Trunking	PT. Jasa Marga
18.	Drafting Of The Documents Of The Founding Of The University Of National Defense	Dir. Jend. Strategis Pertahanan Dep. Pertahanan RI
19.	Soil Test For Planning An Expansion Of The Department Of Business Administration	Politeknik Negeri Jakarta
20.	Consultancy Services Making Environmental planning and Guide the development of integrated Information Industry Corridor/KIKT (Environment Planning And Development Guidelines for Integrated Industrial Corridor of Karawang/IICK) Kab. Karawang Prop. JaBar	PT. Karawang Jabar Industrial Estate (PT. KJIE)
21.	Execution of Geotechnical survey of Offshore sea water Depth Sowan 15 M – Banyu Urip Project	PT. Pertamina EP Cepu
22.	Preparation Of Documents For Auction Information Systems Application Development Work Law Areas Of Law-SETPER	PT. PLN (Persero) Kantor Pusat
23.	Research/Test Conditions the ability Multi Purpose Truck (Komo) on the Road	PT. Jasa Marga
24.	Preparation of Documents For the auction Employment Extension and addition of licenses and support for Symantec Antivirus	PT. PLN (Persero) Kantor Pusat
25.	Study on lightning protection system installation and grounding terminals balongan SP & CO2 Removal earrings and SP tambun	PT. Pertamina EP Region Jawa
26.	Design Details Head Office of Building Structures Repair	PT. Toyota Motor Manufacturing Indonesia
27.	Study of Corrosion Management in Talang Jimar-Field Prabumulih	PT. Pertamina EP Region Sumatera